

sensIQ

EVO white
 EAN 4007841 029562
 Article number 029562



infrared sensor 3 x
100°



3 zones scalable
2-20m

2500 W

2500 W max.



IP54



2 - 2000 lux



5 sec - 15 min



ideal 2 - 5 m



energy saving

5 years

manufacturer's
warranty steinel-
professional.de/
garantie



CE

Function description

King of the infrared motion detectors. The revolutionary sensIQ for indoors and out, ideal for building entrances, loading bays, installation height up to 5 m, quadruple sensor system for optimum coverage over a 300° detection angle, 20 m range (tangential), metre-precision reach setting in 3 different directions, heavy-duty relay for high switching capacity. Remote control and corner wall mount bracket included.

Technical specifications

| | | | |
|----------------------------|-----------------------------------------------------------------------------------------------------------------------------|-----------------------------------------------|---------------------------------|
| Dimensions (L x W x H) | 172 x 113 x 144 mm | LED lamps > 8 W | 500 W |
| With motion detector | Yes | Capacitive load in µF | 176 µF |
| Manufacturer's Warranty | 5 years | Technology, sensors | passive infrared, Light sensor |
| Settings via | Remote control, Potentiometers, Smart Remote | Mounting height | 2,00 – 5,00 m |
| With remote control | Yes | Mounting height max. | 5,00 m |
| Version | white | Optimum mounting height | 2 m |
| PU1, EAN | 4007841029562 | Detection angle | 300 ° |
| Type | Motion detectors | Angle of aperture | 180 ° |
| Application, place | Indoors, Outdoors | Sneak-by guard | Yes |
| Application, room | multi-storey / underground car park, outdoors, warehouse, front door, all round the building, courtyard & driveway, Indoors | Capability of masking out individual segments | Yes |
| Colour | white | Electronic scalability | No |
| Colour, RAL | 9010 | Mechanical scalability | Yes |
| Includes corner wall mount | Yes | Reach, radial | r = 4 m (42 m ²) |
| Installation site | wall, ceiling, corner | Reach, tangential | r = 20 m (1047 m ²) |
| | | Switching zones | 1360 switching zones |

sensIQ

EVO white
 EAN 4007841 029562
 Article number 029562



Technical specifications

| | |
|--------------------------------------------------------|---------------------------------------|
| Installation | Surface wiring, Wall, Ceiling, corner |
| IP-rating | IP54 |
| Ambient temperature | from -20 up to 50 °C |
| Material | Plastic |
| Mains power supply | 220 – 240 V / 50 – 60 Hz |
| Switching output 1, resistive | 2500 W |
| Switching output 1, number of LEDs / fluorescent lamps | 8 pcs. |
| Switching output 1, floating | No |
| Fluorescent lamps, electronic ballast | 500 W |
| Fluorescent lamps, series-corrected | 1800 VA |
| Fluorescent lamps, parallel-corrected | 500 VA |
| LED lamps < 2 W | 100 W |
| LED lamps > 2 W < 8 W | 250 W |

| | |
|----------------------------|----------------------------------------|
| Functions | Normal / test mode, Manual ON / ON-OFF |
| Twilight setting | 2 – 2000 lx |
| Time setting | 5 s – 15 Min. |
| Basic light level function | No |
| Main light adjustable | No |
| Twilight setting TEACH | Yes |
| Constant-lighting control | No |
| Interconnection | Yes |
| Type of interconnection | Master/master |
| Interconnection via | Cable |
| Product category | Motion detector |

Accessories

| | |
|--------------------|-----------------------------|
| EAN 4007841 009151 | Remote control Smart Remote |
| EAN 4007841 007638 | Remote control RC9 |

sensIQ

EVO white
 EAN 4007841 029562
 Article number 029562

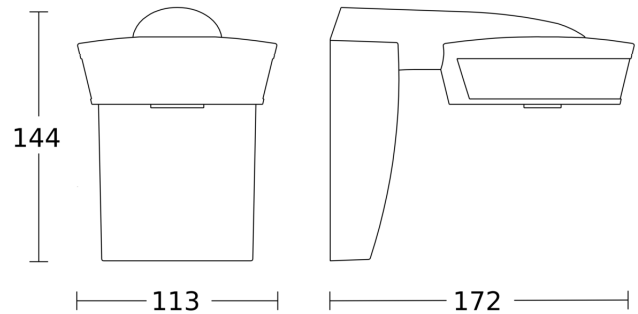


Detection Zone

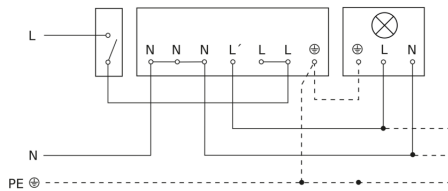


Possible mounting height: 2,00 m - 5,00 m
 Orange: radial
 Black: tangential
 3 scalable zones

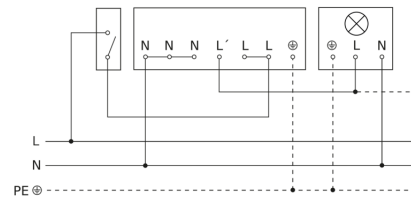
Dimension Drawing



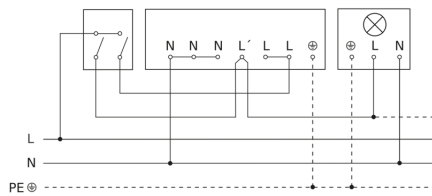
Light without neutral conductor



Light with neutral conductor



Connection using two-circuit switch for manual and automatic operation



Connection of 4-fold push-button coupler to DALI2 APC

